

Bobcat Compact Loader Tires

BOBCAT.COM/TIRES

Where the rubber hits the road

Choosing the best tire is important for machine traction, floatation, wear and overall performance. Tires with the correct height, width and ply rating for your equipment will maintain proper operating efficiency and ensure support of maximum loads. Depend on genuine Bobcat tires for performance, reliability and superior results in all your tough jobs.



Choosing the right tires

The right set of tires will ensure more comfort, better production, and longer tread wear. Follow these charts below to choose the best tires for you based on your application.

	MUD	AG	ROCK	CLAY	SLOPED	TURF	DIRT	RECYCLING	SAND	SNOW	DEMO	CONCRETE
STANDARD DUTY												
HEAVY DUTY												
SEVERE DUTY												
SEVERE DUTY ALL TERRAIN												
TURF & SAND												
SUPER FLOAT												
SNOW												
SOLID (L/R)												
SOLID SEVERE DUTY NON-DIRECTIONAL												
SOLID SUPER SMOOTH												

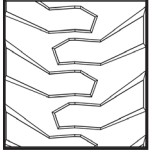
Best Better Good

	STANDARD DUTY	HEAVY DUTY	SEVERE DUTY	SEVERE DUTY ALL TERRAIN	TURF & SAND	SUPER FLOAT	SNOW	SOLID (L/R)	SOLID NON DIRECTIONAL	SOLID SUPER SMOOTH
10 x 16.5	✓	✓	✓	✓			✓	✓	✓	✓
12 x 16.5		✓	✓	✓		✓	✓	✓	✓	✓
15.5 x 16.5				✓	✓	✓		✓		
14 x 17.5	✓	✓	✓	✓				✓	✓	✓



One Tough Animal

Pneumatic Loader Tires

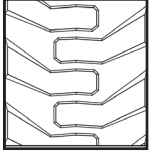


Standard-Duty Loader Tires

Designed for maximum traction and grip, the center lug of the Bobcat standard-duty tire adds extra traction. These tires are created for long wear during normal machine hour applications. The special rim guard and thick sidewalls provide outstanding protection against punctures. Designed for light duty applications.

Recommended Uses:

- Good for all general construction work on concrete, dirt, mud, and multi-surface use
- Not recommended for demolition or turf

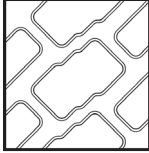


Heavy-Duty Loader Tires

These tires increase protection against punctures and cracks with extra-thick sidewalls. They feature bead guards to shield against rim and sidewall punctures. The combination of superior, self-cleaning rubber, and high ply rating makes these tires ideal for high hour applications. Designed for normal to heavy load applications.

Recommended Uses:

- Great for all more aggressive construction and industrial work on concrete, dirt, mud, and multi-surface use
- Not recommended for snow, demolition or turf

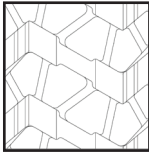


Severe-Duty Loader Tires

When your job demands an aggressive, long lasting tread, choose this tire. It's designed to take on more abuse than a conventional tire and provide superior self-cleaning, for recycling, industrial, rental and other tough applications.

Recommended Uses:

- Great for all general construction work and excellent on concrete, dirt, mud, or sloped surfaces
- Not recommended for snow or turf

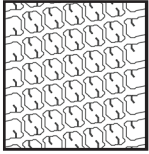


Severe-Duty All Terrain Loader Tires

A non-directional tire with extra deep tread and a wide sidewall that provides superior impact resistance. This tire features a large footprint with a massive lug-to-void ratio. It has a zig-zag tread pattern for optimal traction and handling on mixed surfaces and in severe duty applications.

Recommended Uses:

- Best for concrete and asphalt applications
- Good for snow removal

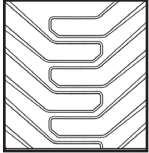


Turf and Sand Loader Tires

This tire is engineered to provide superior floatation characteristics to minimize harm to more delicate surfaces. Turf and sand tires perform great when your work needs to be extra ground-conscience, while still offering excellent traction. These turf-friendly tires reduce damage to grass or roots.

Recommended Uses:

- Best for all turf and landscaping applications and on golf courses, sugar sand, nurseries, sports grounds and cemeteries.
- Great on sand

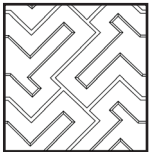


Super-Float Loader Tires

The super-wide sidewalls of the super-float tires are designed to perform in soft or wet soil conditions. At the recommended air pressure, these tires provide 85 percent more footprint area than conventional tires. If your job requires extra floatation, super-float tires will keep you moving in soft or wet applications.

Recommended Uses:

- Best for applications of parks, cemeteries, golf courses, nurseries, beaches and compost yards on soft or wet soil conditions
- Great on sand



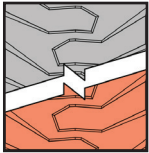
Snow Tires

Tough, versatile and agile, perfectly describe the Bobcat snow tires. The narrow base provides the power and traction you require in harsh winter conditions, making the Bobcat snow tire the ultimate tire for traction on ice and snow.

Recommended Uses:

- Best for snow removal

Solid Loader Tires

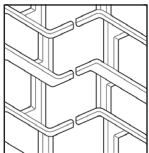


Solid (L/R) Loader Tires

All the benefits of the severe duty pneumatic tire, without downtime due to a flat tire. Also available in an orange non-marking compound..

Recommended Uses:

- Best for construction applications and on rock, mud, clay and sloped surfaces
- Non-marking compound is great for general construction work when no marking is wanted on hard surfaces
- Not recommended for snow or turf

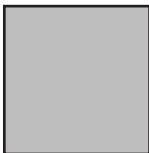


Solid Severe Duty Non-Directional Loader Tires

Designed to reduce downtime due to flat tires, severe-duty solid tires have an aggressive off-road tread pattern for unmatched traction. The tread design provides self-cleaning action. The conical aperture design offers low vibration giving more rider comfort. Large tread depth ensures great performance in severe applications.

Recommended Uses:

- Great for all construction and demolition applications and on rock, mud, clay, concrete and slope surfaces
- Not recommended for snow or turf



Solid Super Smooth Loader Tires

For heavy load applications on flat surfaces such as recycling yards.

Recommended Uses:

- Best for recycling and flat surface concrete
- Not recommended for snow or turf
- Not recommended for mud, clay, or sloped surfaces